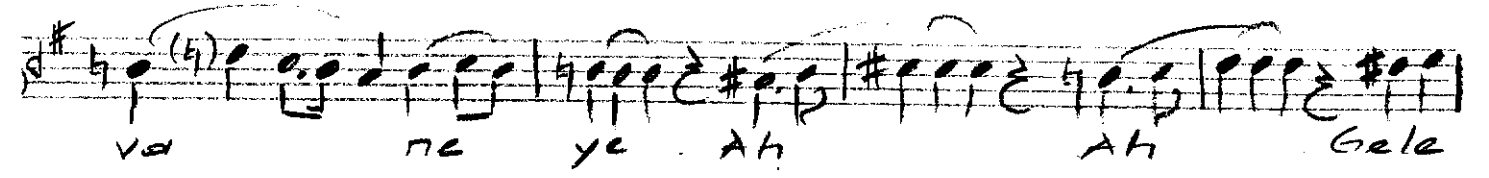
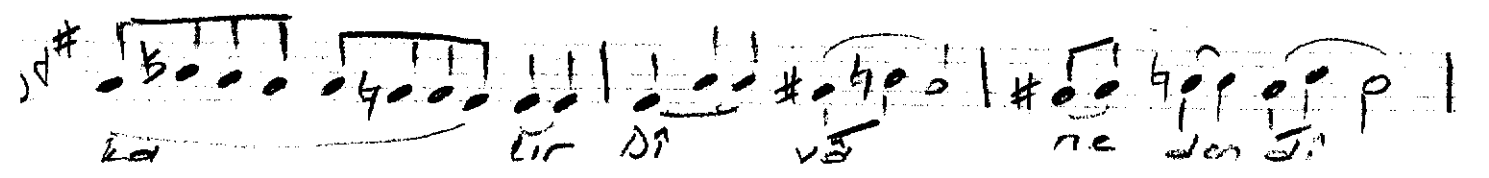
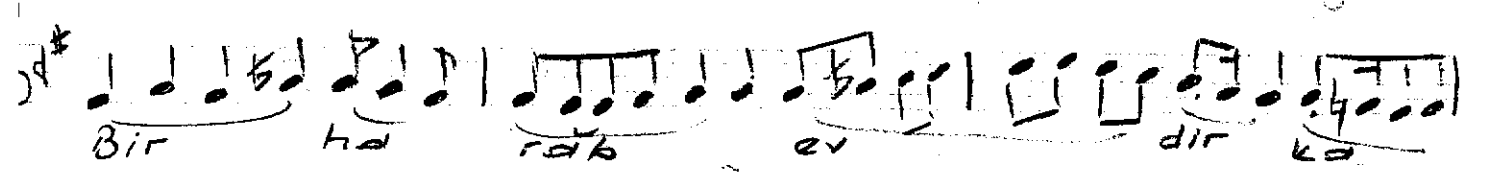
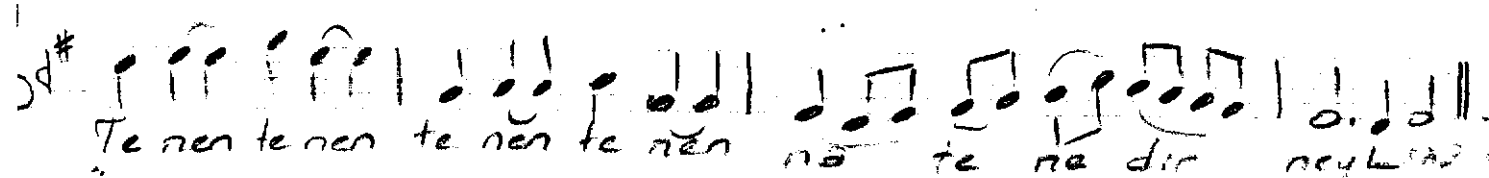
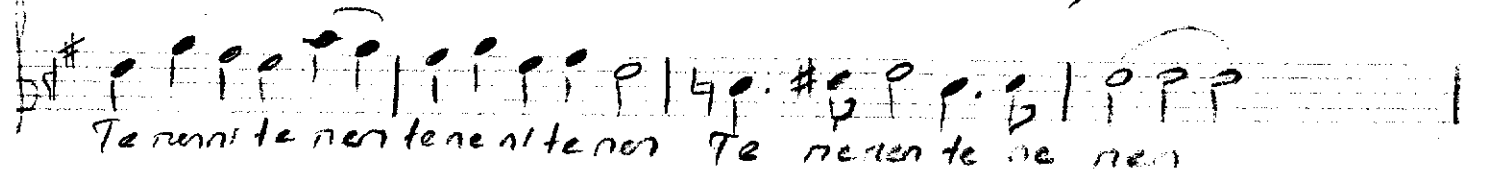
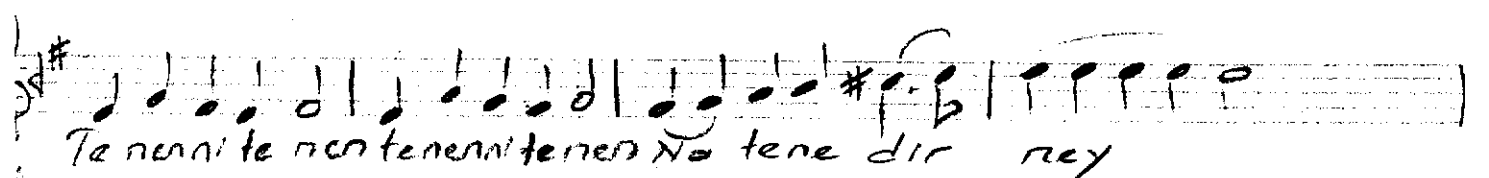
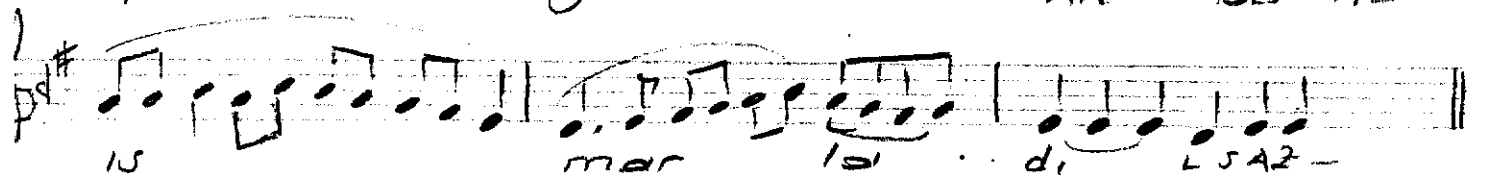
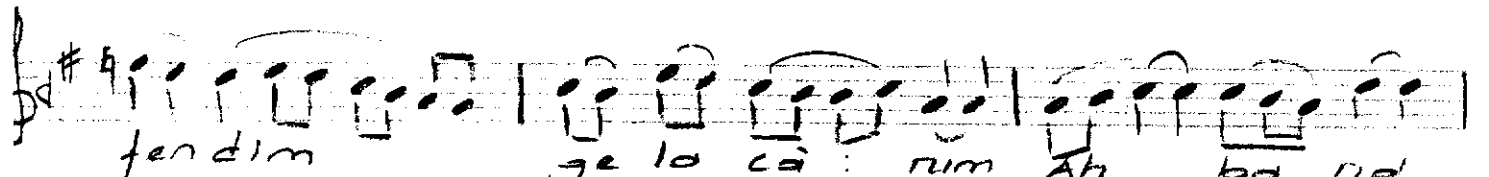
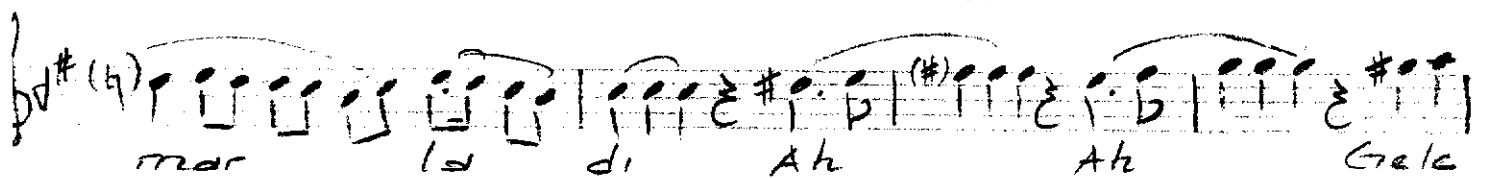
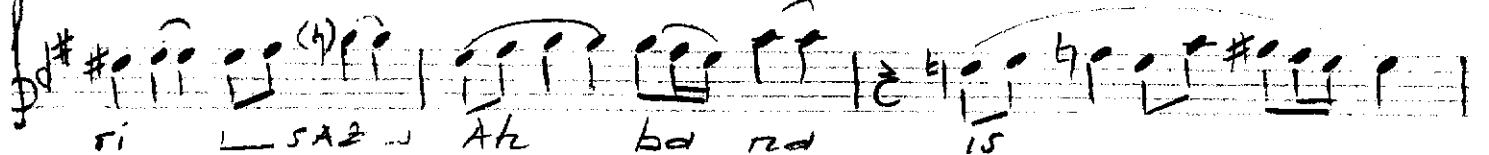
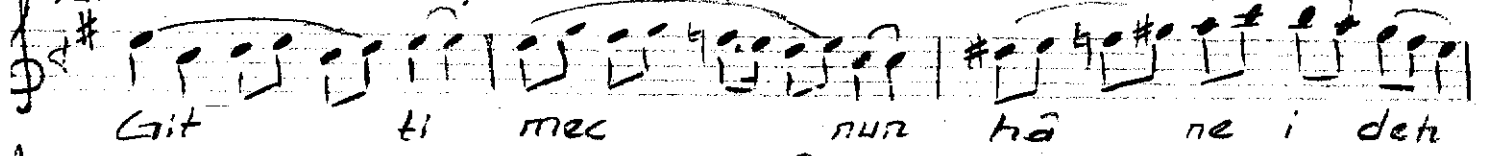


Yürük semai

HİSAR AŞIRAN

ÇANUL PAŞACI





Eritti mecnûn hâne-i dahri banâi ismarladı
 Bir harâb evdîr, kalır dîvâneden dîvânge

(Bu güfte Hâlit Ziyâ Beyin evindeki
 ta'lik hattı yer alıyormuş. - Şehzâde İsmâ
 "Kırık deniz kabukları" adlı kitabından -
 Muhteremler Lâedri.)